

UCSSC Lake Ginninderra Presents



the wedding singer

The Musical Comedy

Show Program

Music by Mathew Sklar

Lyrics by Chad Beguelin

Book by Chad Beguelin and Tim Herlihy

Based upon the New Line Cinema film

Written by Tim Herlihy

By arrangement with Hal Leonard Australia Pty Ltd Exclusive agent for Music Theatre International (NY)

Synopsis

The Wedding Singer takes us back to a time when hair was big, greed was good, collars were up, and a wedding singer might just be the coolest guy in the room.

It's 1985 and rock-star wannabe Robbie Hart is New Jersey's favourite wedding singer. He's the life of the party, until his own fiancée leaves him at the altar. Shot through the heart, Robbie makes every wedding as disastrous as his own. Enter Julia, a winsome waitress who wins his affection. As luck would have it, Julia is about to be married to a Wall Street shark, and unless Robbie can pull off the performance of a decade, the girl of his dreams will be gone forever.



Musical Numbers

Act 1

It's Your Wedding Day

Someday

Awesome

A Note from Linda

Pop!

Somebody Kill Me

Grandma's Note

Casualty of Love

Come Out of the Dumpster

Today You are a Man

George's Prayer

Not That Kind of Thing

Saturday Night in the City

Act 2

All About the Green

Right in Front of Your Eyes

Single

If I Told You

Let Me Come Home

Move That Thing

Grow Old With You

Finale

Cast

Henry Paul as *Robbie Hart*

Natasha Nauenburg as *Julia Sullivan*

Charlie Carr-Batt as *Sammy*

Imogen Paul as *Holly*

Kristian (Kiki) Petrovic as *George*

Simon Chadwick as *Glen Guglia*

Hannah Dawson as *Linda* and Ensemble

Dominique Yeomans as *Rosie* and Ensemble

Emma Fish as *Angie* and Ensemble

Ensemble

Nicolai Lamb

Kaitlyn McMenamin- Boye

Jake Willis

Linor Wood

Ashlee Ramsay

Band

James Court - Assistant Musical Director and Keyboard

Ethan Kinnunen - Drums

Robert Armour - Bass

Morgan Alexander - Flute

Sam Yialeoglou - Trumpet

Production Team

Director

Kelly Roberts

Musical Director

Joella Keech

Assistant Director and Stage Manager

Charlotte Stevens

Set, Costumes and Props

Kelly Roberts and Charlotte Stevens

Lighting

Erin Morgan, Ambre Marshall, Cate Starkovski and Martin Watson

Sound Technicians

Connor Hicks and Mathew McNally

Crew and Stage Hands

Heather Mitchell, Mikayla Curran, Tom Vogt, Georgia Brook,

Ella Rooney, Natalie Sheils, and Daniel Thompson

From the Artistic

Director

Kelly Roberts



This is my directorial debut this year at UCSSC Lake Ginninderra and I couldn't have asked for a better experience. I was fortunate enough to have seen the original cast perform *The Wedding Singer* on Broadway in 2006 and I was thrilled to find out that we would be putting on the production here. I enjoyed all the humour and high energy in the Broadway show and was excited to replicate that feeling with a fantastic group of high energy students! The students have worked incredibly hard this semester to bring the essence of the eighties to life, from the bad hair styles and fashion right through to the musicality in their songs. They have worked hard to capture what it was like in an era that none of them grew up in and really took every challenge on board.

We hope you enjoy the playful songs, energetic dance numbers, colourful sets, and laugh out loud humour of this show. We also hope you have as much fun watching it as we did creating it!

From the Musical

Director

Joella Keech



'*The Wedding Singer*' uses a clever mix of stock standard 1980's musical techniques to produce a variety of numbers that encompass the tackiness of the era. In the UCSSC LG version of the Musical, the on-stage comedy extends to the orchestra through the use of the on-stage band syncing songs with the pit band. We have utilised keyboards to mimic the unique sound of the 80's and used a select ensemble to support this.

The UCSSC LG band is made up of current students, alumni and friends of the cast. They are a skillful ensemble who play with enthusiasm even though they weren't born in the 80's. Their advanced musicianship has led them to learn a huge amount of music in a short period of time and to remember cues, styles and tempos without direction. Thank you Band, for your hard work and dedication.



Henry Paul as *Robbie Hart*



Natasha Nauenburg as *Julia Sullivan*



Charlie Carr-Batt as *Sammy*



Imogen Paul as *Holly*



Kristian (Kiki) Petrovic as *George*

Simon Chadwick as *Glen Guglia*





Hannah Dawson as *Linda*



Dominique Yeomans as *Rosie*



Emma Fish as *Angie*



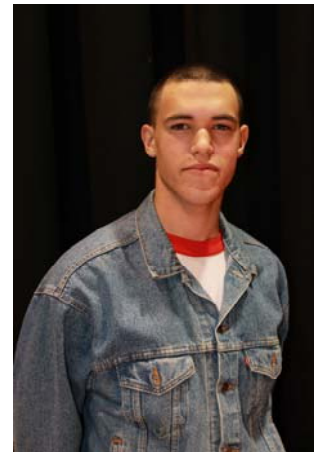
Jake Willis - Ensemble



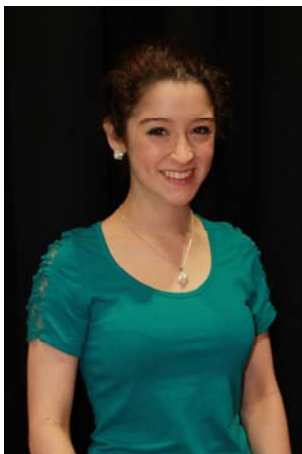
Linor Wood - Ensemble



Ashlee Ramsay - Ensemble



Nicolai Lamb - Ensemble



Kaitlyn McMenamin-Boye
- Ensemble

Autographs

Special Thanks To

The cast and crew of The Wedding Singer would like to give special thanks to

James Court for his musical contributions,

Charlotte Stevens, Mary Woodhouse, Gerard Barrett and Sam Townsend for their help,

the Staff of UCSSC Lake Ginninderra for their ongoing support and assistance,

as well as Concorde Sound and Lighting.



UC SENIOR SECONDARY COLLEGE
LAKE GINNINDERRA