



THE WIZ

An Amateur Production presented by

Lake Ginninderra College

22-25 September

Produced and directed by Joella Keech and Jenny Hanson

By special arrangement with Dominic Pty Ltd.

Book by William.F. Brown Music and Lyrics by Charlie Smalls



Thank you for your support for the Lake Ginninderra College musical.

We have a wonderful and varied history of theatrical productions at Lake but I am also pleased we can now offer an even wider range of opportunity and experience for our students. In the early years of the college, musicals were a feature and building on our success in *The Little Shop of Horrors* in 2009 we are pleased to bring you our production of *The Wiz* in 2010.

The amazing effort and expertise that make such endeavours possible go far beyond the day to day expectations of our staff. Countless extra hours for planning, rehearsing, making and ultimately overseeing the performances are both a sacrifice and experiences that bring rewards – for staff and students.

The commitment by the team of teachers, administrative staff, the performers and the crew to bring the show to the stage has been outstanding – there is so much to learn and all the team have worked tirelessly to make it possible for you to be here and to be entertained.

The students have been fantastic in taking on the responsibilities and demands of the show and I hope the experience is one they have learnt from, loved, and will remember.

I am also gratified that our new staging and seating (through a Federal Building the Education Revolution grant) is such a great resource allowing us to create a much more versatile and comfortable environment for patrons and flexibility for future productions.

Again, thank you for your support. Enjoy the show!

Martin Watson
Principal



The Wiz

Act 1

Prologue for The Wiz:

Kansas: The Feeling we Once
Had
Tornado

Munchkin Land: He's the Wiz

Oz Countryside: Soon as I
Get Home
I was Born on the Day Before
Yesterday
Ease on Down the Road

Woods: Slide Some Oil to Me
Ease on Down the Road

Jungle: Mean Ole Lion
Ease on Down the Road

Kalidah Country: Kalidah
Battle

Poppy Field: Be a Lion
Lion's Dream

Emerald City

Throne Room: So You Wanted
to Meet the Wizard
To Be Able To Feel

Act 2

West Witch Castle: No Bad
News

Forest: Funky Monkeys

Courtyard: Everybody
Rejoice

Emerald City Gate

Throne Room:
Believe in Yourself

Fairgrounds: Y'all Got It!

Outskirts

Quadling Country: A Rested
Body is a Rested Mind
Believe in Yourself
Home

The Wiz
Adapted from "The Wonderful Wizard of Oz" by L.
Frank Baum

Book by William F Brown
Music and Lyrics by Charlie Smalls

By special arrangement with Dominie Pty Ltd



From the Musical Director: Jo Keech

The music for *The Wiz* reflects the jivin' time in which it was written. The intricate rhythms and varied styles including Motown grooves balanced with emotional ballads and funky dance pieces provides the audience with a diverse musical experience.

The band has been enthusiastic and interested in learning the intricate score that requires playing at a professional standard. Rehearsing and performing with a contrasting group of instruments has provided students with new experiences and enhanced their musical education. Their level of teamwork and support for members of the cast has been outstanding.

This group of students has been fantastic to work with and I, as Musical Director, have enjoyed every moment of the show. I hope you do too.



From the Director: Jenny Hanson

The Wiz is a challenging play for cast and crew. Within the first fifteen minutes of the show, we have a tornado happen live on stage, a road that is more character than set, and some amazing music. Our students have risen to this challenge and produced a brilliant piece of theatre, and one that I very much hope you enjoy.

This musical was originally written for a very different time and place than the one we're performing in, but at its heart is one of the most fundamental stories that we have — the story of young people growing up and learning to live in the adult world. When Dorothy returns to Kansas, she is not the only one changed by her journey.

The cast and crew hope very much that you enjoy the show, and we'd like to answer the question that we've been asked the most: why are the slippers silver? Well, MGM turned them to ruby for their 1939 musical — in Frank Baum's original book, they were silver, and they're every bit as magical now as they were when the book was first published in 1900.





The Cast

Thando Sikwila	Dorothy
Courtney Young	Dorothy
Edward Lucas	Tin Man
Max Bittisnich	Scarecrow
Sam Yialeloglou	Lion
Hamish Pain	The Wiz
Rachel Steele	Addaperle
Alyssa Cooper	Evillene
Elly Armour	Glinda
Charlotte Stevens	The Gatekeeper
Blake Proberts	Lord High Underling /Uncle Henry
Grace Edwards	Aunt Em
Jarraah Cohen	Head Monkey
Kieran Mancey	Mice Squad Leader
Shane McGillivray	Messenger
Rachel Nell	Chorus
Ruth Hanley	Chorus/pit singer
Chantelle Moran	Chorus
Aline Weber	Chorus/lead dancer



The Band

Ethan Kinnunen	Drums
Andrew Brown	Piano
Marc Gantenbein	Guitar
Frank Van Der Merwe	Guitar
Corrina Schoen	Violin
Skye Singh	Flute
Rosa Newton-Walters	Clarinet
Louise Caldwell	Trumpet
Tim Bowyer	Trumpet
Suzzanah Hogg	French Horn
Ruth Findlay	Piano

Lighting and Sound

Joshua Paul
Tom Hogg (+ Toto Design)
Harry Enright
Tom Hanley
Jacob Thornton
David Eldridge
Ethan Kinnunen

The Backstage Crew

Rhianon McDonald
Tess Seymour
Alkira Reinfrank
Melinda Kavangh
Damien Hicks
Michael Wills
Danny Nguyen
Breanna Redman
Sonya Brennan
Zac Brown
Ford Flynn



Stage Construction

Joe Willmott

Assisted by :the woodwork and metalwork classes

Costumes

Costume creation and design: Mae Barbieri, Amanda Williams, Kate Fitzgerald and Sonya Brennan

Costume creation and management: Jess Hannan

Choreography

Charmaine Hallam and Aline Weber

Catering

Bev Carroll and the Hospitality class

Photography

Mikhaila Jurkiewicz

Acknowledgements

Eclipse Lighting and Sound

All the Administrative Staff, particularly Colleen Wright, Debbie Whitton, Kristine Warren, Athina Whild, Daisy Leung, Bob Lofthouse and Rade Pudja.

Staff helping with front of house: Fran Black, Kim Nichols, Susan Taylor, Heather Donohoe, Amanda Kabaila, Heather Donoghue, Joan Ritchie

Props and Painting

Rhianon McDonald, Tess Seymour, Rebecca James, Mary Woodhouse, Jess Hannan, Ann Widdup, Jo Keech, Jenny Norton, Lana Burmeister and other cast and crew.

Special thanks to Maxine Mannix for enabling a reliable supply of dry ice throughout the production!

Publicity

Poster designed by Kate Fitzgerald and Rhiannon Trudinger

Posters and programme: Ann Widdup and Mary Woodhouse

Advertising: Kirsten Vizjak and Gerard Barrett.

Thank you to Melba Copland College for allowing Corrina Schoen to play with the band and also to

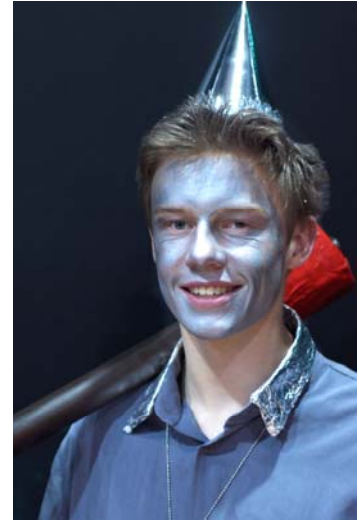
Teloepa Park School for allowing Suzannah Hogg to play with the band.



Thando Sikwila



Max Bittisnich



Edward Lucas



Sam Yialeoglou



Hamish Pain



Rachel Steele



Elly Armour



Alyssa Cooper



Blake Proberts



Grace Edwards



Jarrah Cohen



Ruth Hanley



The Chorus

From left: Rachel Nell, Charlotte Stevens, Rachel Nell, Shane McGillivray, Kieran Mancey,
Grace Edwards
Front Row: Aline Weber, Chantelle Moran.

The Band



Not Pictured: Tim Bowyer, Frank van der Merwe and Suzannah Hogg

Backstage, Lighting and Sound



Not pictured: Tom Hogg, Harry Enright, Jacob Thornton, David Eldridge, Ethan Kinnunen, Zac Brown, Ford Flynn

Autographs



Lake Ginninderra

Senior Secondary College

Commitment to Excellence