

Leader of the Pack

22-25 August 2018

Lake Ginninderra College Theatre

Leader of the Pack

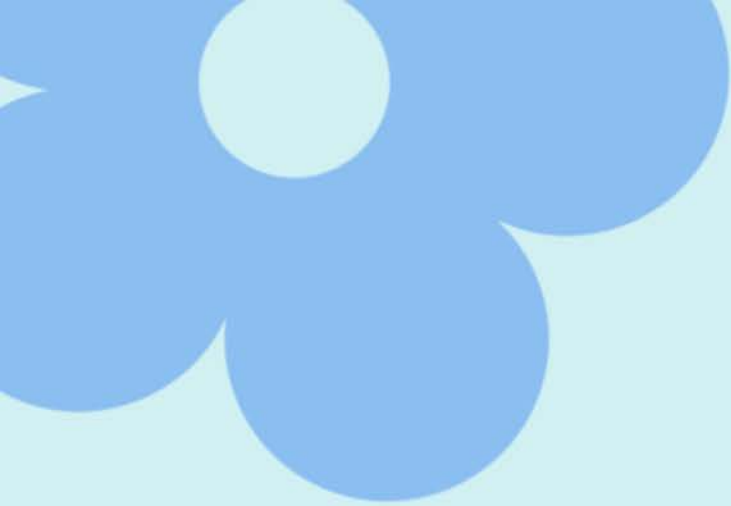
22-25 August 2018

Lake Ginninderra College Theatre

**Leader
of the
Pack**

22-25 August 2018

Lake Ginninderra College Theatre



"Leader of the Pack: The Ellie Greenwich Musical"

Music and Lyrics by Ellie Greenwich and friends

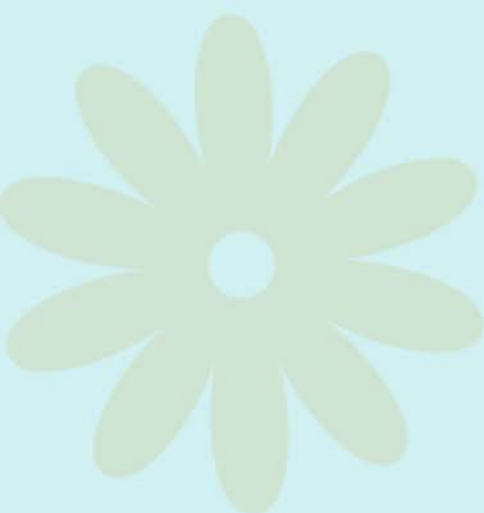
Liner notes by Anne Beatts

Additional material by Jack Heifner

Based on an original concept by Melanie Mintz

By Arrangement with ORiGiN™ Theatrical

On behalf of Samuel French, Inc.



Synopsis - Act 1

Darlene Love, serving as a narrator, welcomes us to the 1980s and the still-present popularity of songs from the 1960s ("Be My Baby"). Darlene then takes us back to a simpler time, the 1960s, and the music of that period as well ("Wait 'til My Bobby Gets Home"). Enter Ellie Greenwich, a teenage girl living in Levittown, New York. She dreams of her own musical success, but is sidelined by her mother who wishes for her to pursue a degree in education ("A...My Name Is Ellie"). In Ellie's spare time, she forms a trio with her two best friends, Shelley and Mickey, called the Jivettes. The Jivettes are given a chance to record a single at the Brill Building, which they believe could be their big break ("Jivette Boogie Beat"). Fast forward a few years later where Ellie, now finished with school, attempts to get a job writing at the Brill Building. There she meets a fellow writer, Jeff Barry, and Gus Sharkey, a music producer (in the vein of Phil Spector). Despite scepticism from Gus, Ellie writes and records her first hit single ("Why Do Lovers Break Each Other's Hearts?").

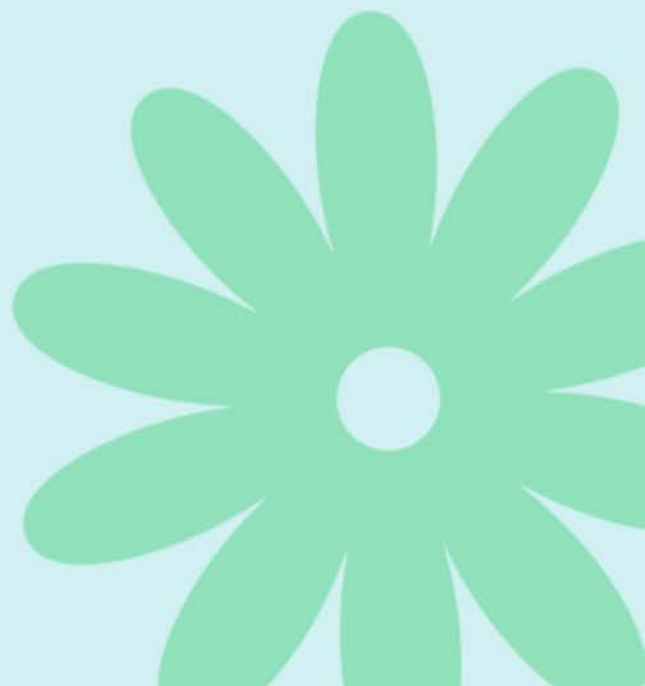
At an office party celebrating her hit single, Ellie and Jeff meet again and begin flirting with each other ("Today I Met The Boy I'm Gonna Marry"). The office party culminates into a huge dance party, with each side singing about the opposite sex ("I Wanna Love Him So Bad/Do Wah Diddy"). Ellie and her friends reflect on Ellie's first date with Jeff and what their future holds ("And Then He Kissed Me"). On their second date, Ellie believes her and Jeff are going all the way, but Jeff's intention was only to co-write music with her ("Hanky Panky"). Jeff and Ellie get engaged despite objections, ("Not Too Young To Get Married") and they elope a few months later ("Chapel Of Love"). Jeff and Ellie are now romantically involved as well as professionally, and they are an unstoppable team of songwriters. They continue to crank out hit songs for Darlene Love, The Crystals, The Shangri-Las, and Connie Francis, with much success ("Songwriting Medley") and produce a new song for The Ronettes that nets the pair much acclaim ("Baby, I Love You"). Jeff and Ellie are enjoying their newfound fame and wealth. However, things begin to take a rocky turn when Jeff begins to venture off and work solo without Ellie, and tensions rise between the two ("Leader Of The Pack").



Synopsis - Act 2

Jeff and Ellie are in the midst of receiving numerous awards for their work, but it has become obvious their marriage is on the rocks. Jeff wishes to settle down while they are at the top and start a family whilst Ellie wishes to continue working. This culminates into Jeff breaking off the marriage since he and Ellie want different things ("Look Of Love"). Ellie, still in love with Jeff and heartbroken over the separation, refuses to let anybody know that the marriage dissolved ("Christmas (Baby, Please Come Home)"). A few years have passed and Ellie is still writing music. She happens upon Jeff in the Brill Building one day when he arrives from Los Angeles on business. Ellie candidly admits how she misses him and wants to reconcile. However, Jeff is already engaged and settled in Los Angeles, much to Ellie's shock ("I Can Hear Music"). Not being able to cope with her personal tragedies, Ellie spirals into a nervous breakdown ("Rock Of Rages").

After a brief flash-forward into the 1980s, we see a renewed adult Ellie Greenwich who is in control of her life. As she teaches a master class, she reflects back on some of her most famous work ("Da Doo Ron Ron"). However, she is also reminded of her former life and husband when telling about another one of her works ("What A Guy"). Ellie realizes that she and Jeff's issues are a thing of the past and that her life is more successful than ever before. Ellie reunites with her equally successful friends, Darlene Love and Annie Golden and gives Darlene a chance to sing a song that was originally hers, but reassigned to Tina Turner ("River Deep, Mountain High"). After reflecting on the life and times of their friendship, Ellie realizes that, through triumph and turmoil, she did make it in the end ("We're Gonna Make It After All").



From the Director

The name 'Ellie Greenwich' may not be familiar to you, but like a number of talented and 'unknown' women of her era, she was a pioneer in the music industry on a number of fronts. With a beautiful voice, a musical ear, a talent for writing lyrics and the ability to adapt to changing technology, she was quickly taken up by the infamous producer Phil Spector (in the musical a character called 'Gus Sharkey').

Ellie faced a number of challenges throughout her life; a career for an undeniably talented woman in an essentially male industry seemed to be the easy part! Her relationship with Jeff Barry both professionally and personally remained both profitable and problematic, whilst the death of her parents affected her profoundly leading into a complete mental breakdown.

Despite these challenges, Ellie remained resilient in her comeback with music becoming her true opus. The songs she had a part in producing are ubiquitous and timeless, making her one of the greatest song writers and music producers of our time. It has been a pleasure working with such a talented cast, band, crew and community to bring this 'unknown' woman some of the acclaim that she once aspired to as a young girl.

From the Musical Director

This musical retrospective, 'Leader of the Pack' celebrates the hit songs of Ellie Greenwich whose doo wop sounds skyrocketed to the top of the sixties charts. The songs and music presented many challenges for the cast and band with a wide range of performance styles called for from up tempo four-part harmony ditties, straight, swing and shuffle styles at a moment's notice through to slow emotive ballads. The band and cast displayed their flexibility working with passion, enthusiasm and dedication to incorporate these musical nuances as well as work through the sheer volume of material present.

Along with the much appreciated support of staff, parents and helpers, their efforts have culminated in the high level of performance you see before you. It has been a delight to work alongside the entire cast and crew, observing each individuals development as we have created this production. Enjoy!



Songs - Act 1

Opening / Opening Dance

Orchestra

Be My Baby

Annie, Ladies, Offstage

Wait 'til My Bobby Gets Home

Darlene, All

A My Name Is Ellie

Ellie

Jivette Boogie

Mickey, Ellie, Shelley

Why Do Lover's Break each Other's Heart's?

Gus, Darlene, All

Today I met the Boy I'm Gonna Marry

Darlene, All

I Wanna Love Him So Bad

Ellie, Girls, Christopher

Do Wah Diddy

Jeff, Men

And Then He Kissed Me

Ellie, Girls

Hanky Panky

Jeff, Men

Not Too Young To Get Married

Darlene, Girls, Bass

Chapel of Love

Ellie, Girls

Songwriter's Medley

Ellie, Jeff, Gus, Pattie, Backup Singers

Baby I Love You

Annie, Girls, Offstage Voices

Leader of the Pack

Jasmine, Barbara, Shirley, Annie, Girls

Songs - Act 2

**Leader of the Pack Dressing Scene /
Be My Baby (Swing)**
Orchestra

Look of Love
Pattie

Christmas baby Please Come Home
Darlene, Singers, Bass

I Can Hear Music
Annie, Back-ups, Bass, Ellie, Jeff

Rock of Rages
Ellie

Da Doo Ron Ron
Ellie, All

What A Guy
Ellie, All

River Deep Mountain High
Darlene, All

We're Gonna Make It After All
Ellie, Annie, Darlene, All

Bows
Orchestra

Exit Music
Darlene, All, Orchestra



Cast

Asher Barry **Shelly**
Aisling Doyle **Ellie Greenwich**
Phoebe Edwards **Darlene Love**
Justice Georgopoulos **Keith**
Bec Haisman..... **Annie Golden**
Jodie Haisman **Pattie Darcy**
Caleb Hodgson **Jeff Barry**
Tenzing Johnson **Gus Sharkey**
Josie Lutze **Mickey**
Helen Mansbridge **Rosie Greenwich**
Eden Menaughton **Jodie / Waitress**
Chris Nell **DJ Danny**
Chris Rossel **Peter**
Naris Suwanmuk **Christopher**
Erin Webster **Barbara**
Grayson Woodham **Lon**



Directors, Crew & Band

Dale Thain **Director**

Lane Moore **Musical Director**

Caitlin Kenyon **Technical Support**

Helen Mansbridge **Stage Manager**

Jenny Hanson **Front of House**

Dana Packham **Publicity**

Karinne Campbell **Flute**

Kate Ligteringen **Flute**

Chris Cutting **Trumpet / Synthesizer**

Lockie Gyles **Trombone / Euphonium / Tuba**

Michael Larsen-Collins **Guitar**

Lane Moore **Piano**

Imogen Rayner **Bass Guitar**

Micah Heathwood **Drums**



Special Thanks



Martin Watson & Joella Keech

Eclipse Lighting and Sound

Chris Moore

Gerard Barrett

Lydia Smith

Audacity Dance - West Coast Swing

Beverley Ness

UC Kaleen High School

Burgmann Anglican College

Gold Creek School

Michael Carnovale

Gerry Gout

**And all staff, students and community
members who helped with supervision,
props, costumes, Front of House and
publicity.**



